

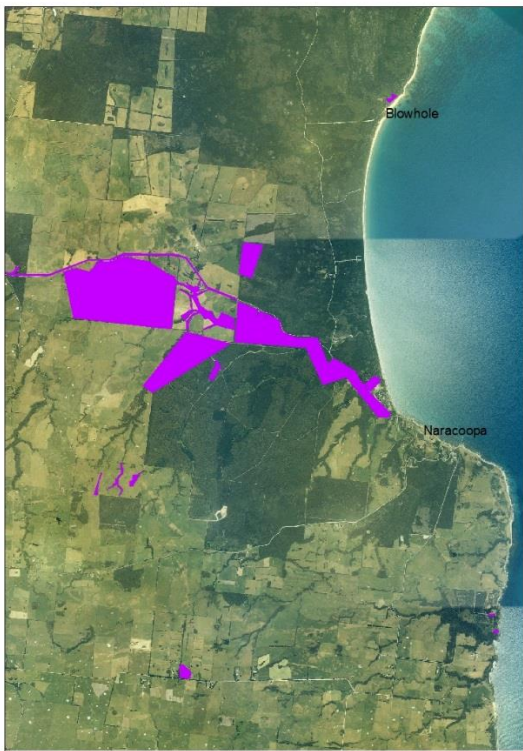
INKWEED

Phytolacca Octandra

A new weed alert for King Island

Have you seen it?





Known locations of Inkweed on KI in pink

We need your help to look out for this weed on King Island. The more people who can identify it and let us know where they see it, and/or control it themselves, the more hope we will have of stopping it from taking over!



Inkweed berries (15cm)



Leaves (20cm) and buds (15cm)



Inkweed plant (2 metres)

King Island is the only location that Inkweed is known in Tasmania.

It has invaded areas of coastal New South Wales and originates from South America. We think it has been introduced to King Island on machinery.

KINRMG have had considerable funding to control and map in 2019, and will be seeking more. Landcare Australia consider this weed incursion important enough to grant us \$40,000!

We also need to take this weed seriously.
PLEASE MAKE SURE **YOU** DON'T SPREAD IT.

Contractors MUST clean their machinery if they work in Inkweed areas. Already we are seeing evidence of machinery spreading it to new places. For information on cleaning machinery, visit

<http://agriculture.vic.gov.au/agriculture/pests-diseases-and-weeds/weeds/weedstop-vehicle-hygiene-program/machinery-hygiene>

If areas of Inkweed are disturbed, seedlings will grow and must be controlled when they germinate.

It is very important we get control of Inkweed as it is currently isolated to a relatively small area (see map), but could spread far and wide with the help of birds and machinery.

To report a sighting or for further information, please contact Eve on email eve41013@gmail.com or 0447805286

Brought to you through funding provided by
Landcare Australia
National Landcare Program



King Island
Natural Resource Management Group Inc